

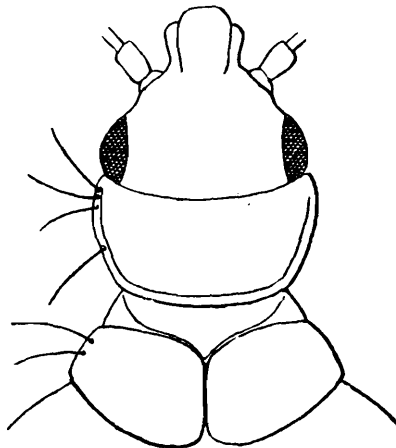
## DESCRIPTION OF A NEW BAT-BUG FROM INDIA.

By DR. G. HORVÁTH.

Dr. W. S. Patton had the kindness to send me for examination a single specimen of a Cimicid taken from a bat in India. This specimen represents a new species belonging to the African genus *Macrocranella* Horv. (*Leptocimex* Roubaud), which I am very glad to name in honour of Dr. Patton, as a sincere homage of his valuable activity in medical entomology.

### ***Macrocranella pattoni*, sp. nov.**

Albida, laevigata, setis fusco-testaceis longiusculis erectis superne sat dense vestita; capite cum oculis longitudine sua vix latiore et pronoto paullo angustiore, vertice oculo plus quam quintuplo latiore; oculis nigris, parum prominulis; antennis corpore paullo brevioribus, pilis semiadpressis brevibus obsitis, articulo primo apicem capitis haud attingente, articulo secundo articulo praecedente quadruplo longiore,



*Macrocranella pattoni*, sp. nov.

articulo tertio articulo secundo dimidio longiore, articulo quarto articulo tertio  $\frac{1}{3}$  brevioribus; articulo secundo rostri articulo quarto longiore; pronoto longitudine sua media paullo minus quam duplo latiore, postice et ad latera anguste marginato, antrorsum dilatato, lateribus leviter arcuatis et setis articulo primo antennarum longioribus praeditis; scutello longitudine sua media fere triplo et dimidio latiore; elytris fere  $\frac{3}{10}$  latioribus quam longioribus, apice oblique rotundato-truncatis, marginibus suturali et costali subrectis, angulis apicalibus interno et externo rotundatis, abdomine fere orbiculari, femoribus et tibiis pilis semiadpressis brevibus setis dense vestitis. ♀ Long. corporis 2.5; lat. pronoti 0.6, abdominis 1.6 mill.

E. India.

Closely allied to *M. boneti* Brumpt, the unique species hitherto known of the genus *Macrocranella*, but differing from it by the smaller size, the shorter and broader head, the less prominent eyes, the proportional lengths of the antennal joints, the less transverse pronotum and scutellum, the nearly circular abdomen and chiefly by the much larger rudimentary elytra.

The proportional lengths of the femora and tibiae are as follows :—  
40 : 38—37 : 40—45 : 56.