

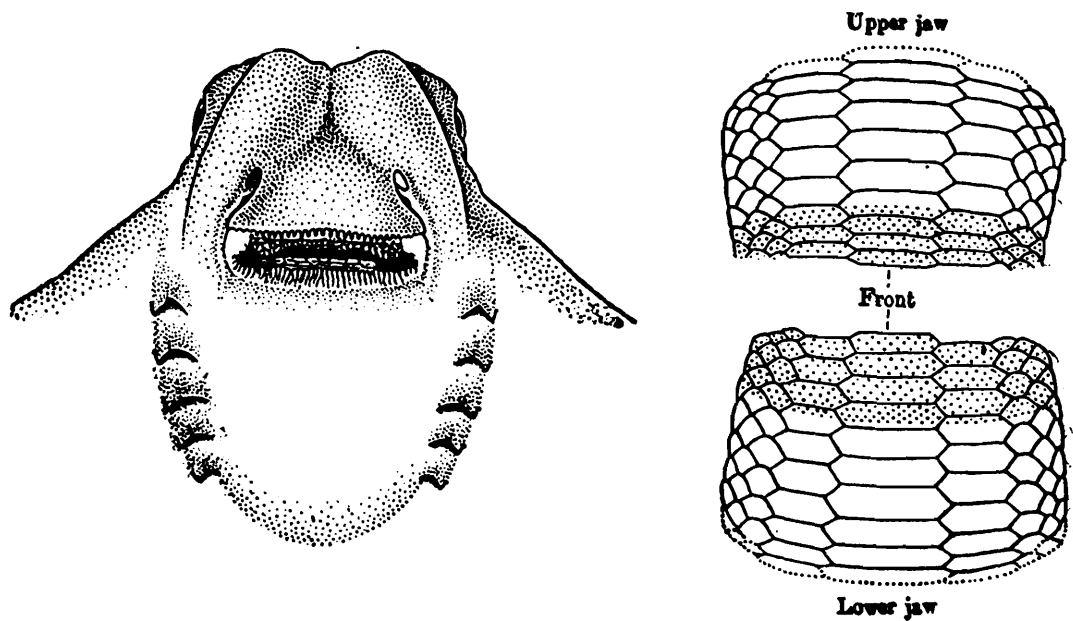
## A NEW SPECIES OF RHINOPTERID FISH FROM SOUTH INDIA.

By K. S. MISRA, D. Sc., F.Z.S., Assistant Zoologist, Zoological Survey of India, Benares Cantt.

(Plate I.)

### **Rhinoptera sewelli**, sp. nov.

In the new species of *Rhinoptera*, described in this note, the length of disk is contained from 1.55 to 1.69 times in its depth and from 1.42 to 1.44 times in its tail. The head is notched in front of the fontanel and between the cephalic fins. The head is contained from 3.98 to 4.12 times in the length of the disk. The diameter of the eye is contained from 5.50 to 6.15 times in the head; from 5.53 to 5.76 times in interorbital width and from 2.58 to 2.92 times in the length of the snout. One



TEXT-FIG. 1.—*Rhinoptera sewelli*, sp. nov.,  
Ventral view of head;  $\times 1/3$ ; Dentition in upper and lower jaws;  $\times 1$ .

edge of the upper lip is fringed, and that of the lower lip is papillated. The teeth are in nine rows on both the jaws, those in the median row 3.6 times as wide as long, those in the next row 2.3 times as wide as long and those in the outer three rows on each side as wide as long. Median rows are narrower on the lower jaw. The gill openings are moderate and equidistant. The last gill opening is the smallest. The spiracles are about double the size of the eye and are situated closely posterior to the eye. The tail is whip-like with a dorsal fin and two small serrated caudal spines above its basal portion. The anterior and posterior caudal spines are very closely apposed together. The anterior and posterior caudal spines are contained from 9.37 to 13.6 and from 2.42 to 3.2 times in the interorbital width respectively.

There is no anal fin. Both the front and the hind edges of the pectoral fins are concave.

The skin is smooth.

In specimens preserved in formalin the dorsal surface and the tail are blackish grey and the ventral surface is pinkish white.

*Type-locality*.—West Hill, off the Calicut coast, Arabian Sea, (Collected by Mr. K. C. Chacko, Govt. Fish curing Yard, West Hill, on 24-11-44.)

*Holotype*.—F79/2, Zoological Survey of India.

*Remarks*.—*Rhinoptera sewelli*, sp. nov. is distinguished from its congeners mainly by the following character:—

Teeth in nine rows in both the jaws (*versus* teeth in seven rows in *R. quadriloba* Lesueur, *R. lalandii* M. H., *R. javanica* M. H., *R. steindachneri* Evermann & Jenkins and *R. neglecta* Ogilby, teeth in nine rows in upper jaw and seven in the lower in *R. marginata* G. Saint-Hilaire, *R. adspersa* M. H., *R. jussieuvi* C., *R. jayakari* Blgr. and *R. peli* Blkr., teeth in 15 rows in upper and 19 in the lower in *R. polyodon* Gthr. and teeth in 14 rows in the lower jaw in *R. encenadae* Smith).

I have much pleasure in naming this new species in honour of Lt. Col. R. B. Seymour Sewell, C.I.E., F.R.S., I.M.S. (Retd.), formerly Director, Zoological Survey of India.

#### Measurements in millimetres.

Total length	619.0	684.0	752.0
Length of disk	272.0	291.0	330.0
Depth of disk	437.0	452.0	560.0
Length of head	66.0	73.0	80.0
Diameter of eye	12.0	12.0	13.0
Interorbital width	64.0	68.0	75.0
Length of snout	31.0	34.0	38.0
Width of mouth	48.0	50.0	54.0
Preoral length	42.0	45.0	47.0
Internarial length	35.0	36.0	40.0
Length of dorsal fin	28.0	29.0	33.0
Length of base of dorsal fin	24.0	28.0	29.0
Length of anterior caudal spine	5.0	5.0	8.0
Length of posterior caudal spine	20.0	28.0	damaged
Length of tail	387.0	425.0	473.0
Sex	♀	♂	♂

#### ACKNOWLEDGMENTS.

I am grateful to Dr. B. N. Chopra, D. Sc., F.N.I., Director, Zoological Survey of India for kindly going through the manuscript and for his helpful suggestions and to Mr. Devi Das Menon, B. Sc., (Hons.), Research Assistant, Marine Biological Station, West Hill, S. Malabar for supplying some specimens of this new species.